

Errata

Please note the description of the main changes made to the Revised edition since the original version was published in 2013.

The list of modified figures includes:

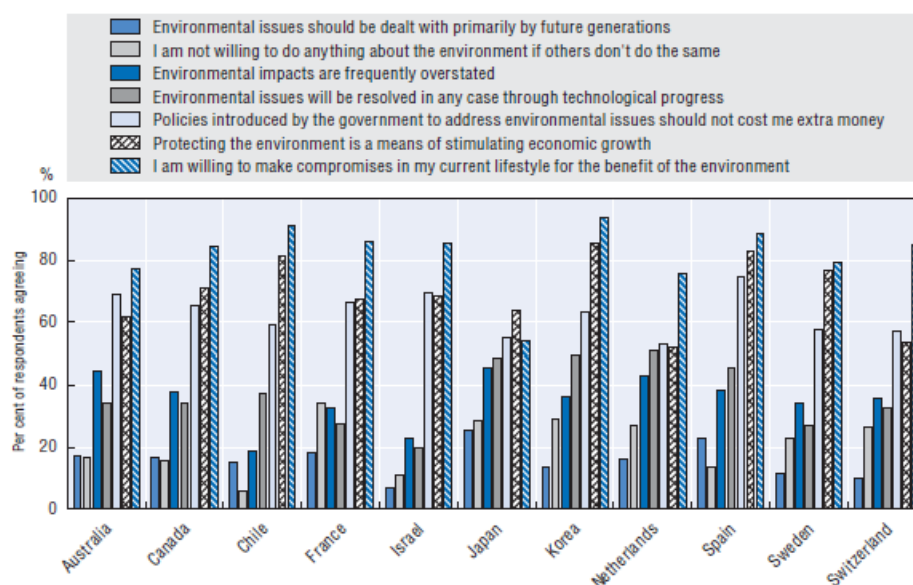
2.6, 2.7, 2.8, 2.9, 2.10, 2.12, 2.13, 2.14, 3.1, 3.3, 3.5, 3.6, 3.7, 3.8, 3.9 (1&2), 3.13, 3.16, 3.18, 3.21, 3.22, 4.4, 4.9, 4.27, 5.5, 5.10, 5.19, 7.6, 7.13, 7.17, 8.7.

The revised edition is available as follows:

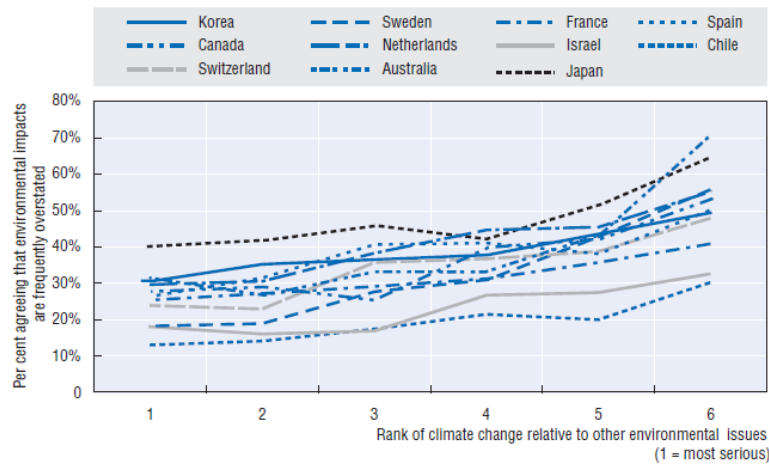
OECD Studies on Environmental Policy and Household Behaviour
Greening Household Behaviour
Overview from the 2011 Survey (Revised edition)
 DOI: 10.1787/9789264214651-en
 ISBN 978-92-64-21464-4 (print)
 ISBN 978-92-64-21465-1 (PDF)
 © OECD 2014

Page 63

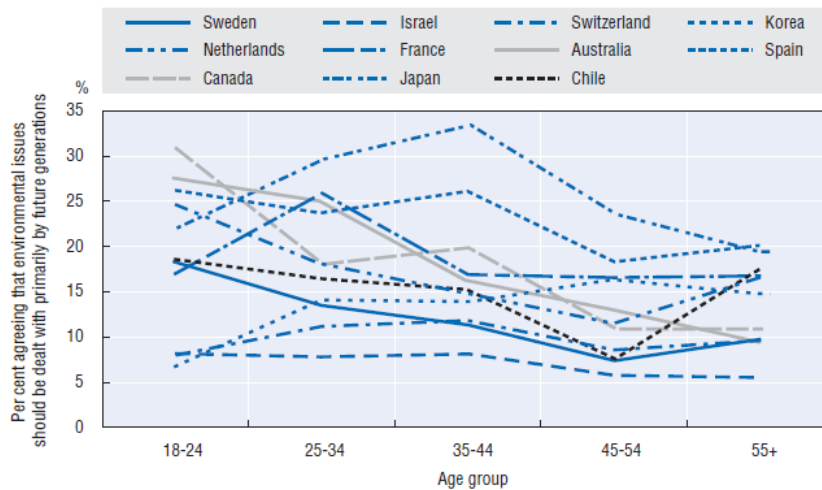
The Figure 2.6 “Levels of agreement with seven statements about environmental policy” has been replaced. The corrections affect the axis text (country inversion). The correct figure reads:



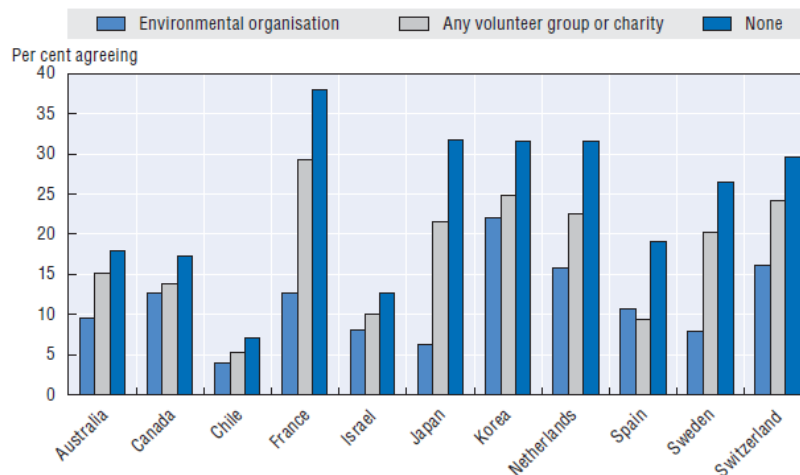
The Figure 2.7 “Scepticism about environmental impacts and views on the seriousness of climate change” has been replaced. The corrections affect the axis text and the legend text. The correct figure reads:



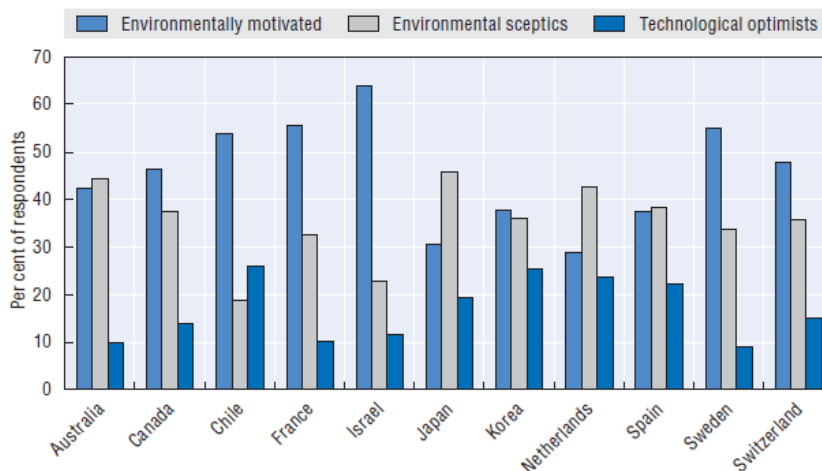
The Figure 2.8 “Views on intergenerational equity across ages” has been replaced. The corrections affect the axis text. The correct figure reads:



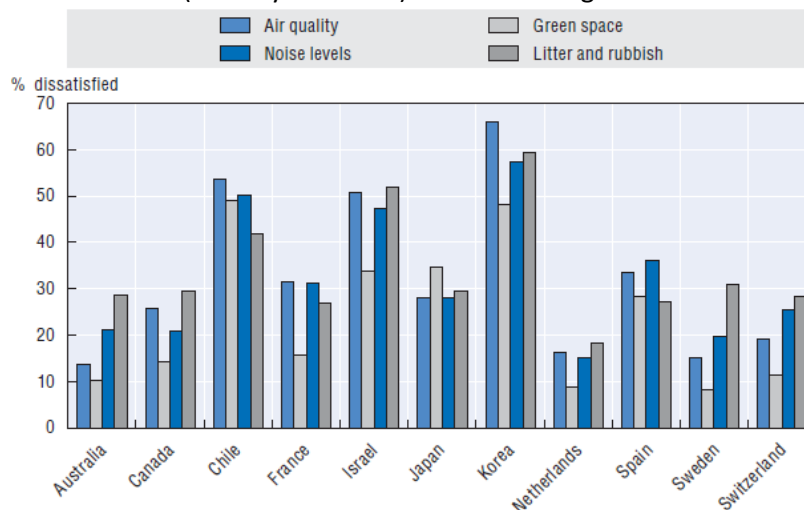
The Figure 2.9 “Agreement with the statement ‘I am not willing to do anything about the environment unless others do the same’, by participation in volunteer organisations”, has been replaced. The corrections affect the axis text (country inversion). The correct figure reads:



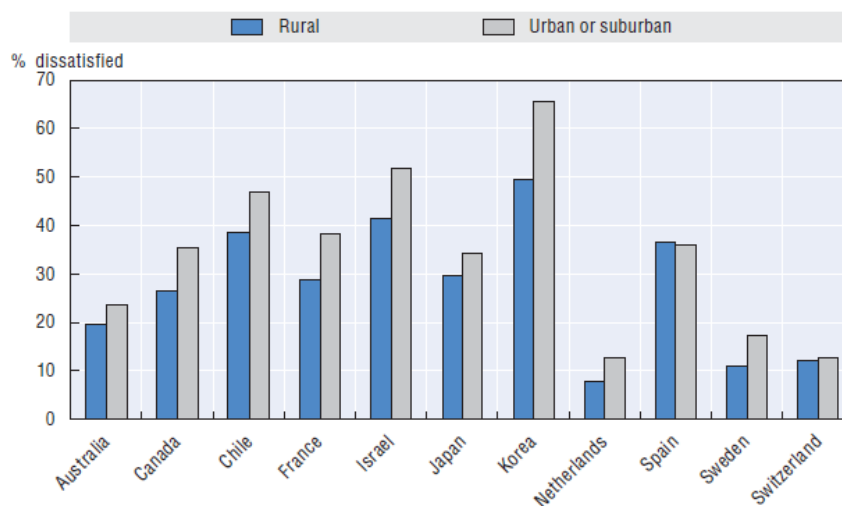
The Figure 2.10 “Size of environmental attitude clusters, by country” has been replaced. The corrections affect the axis text (country inversion). The correct figure reads:



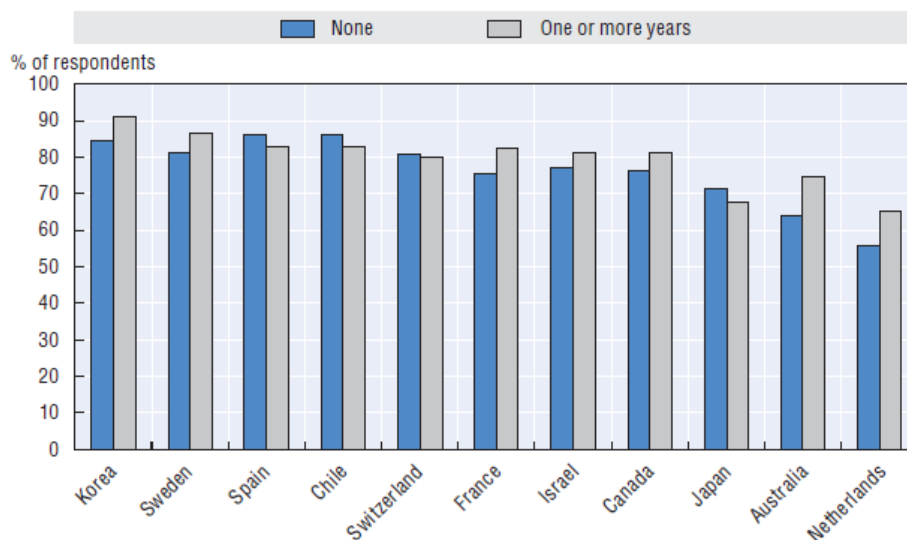
The Figure 2.12 “Levels of dissatisfaction with local environmental quality” has been replaced. The corrections affect the axis text (country inversion). The correct figure reads:



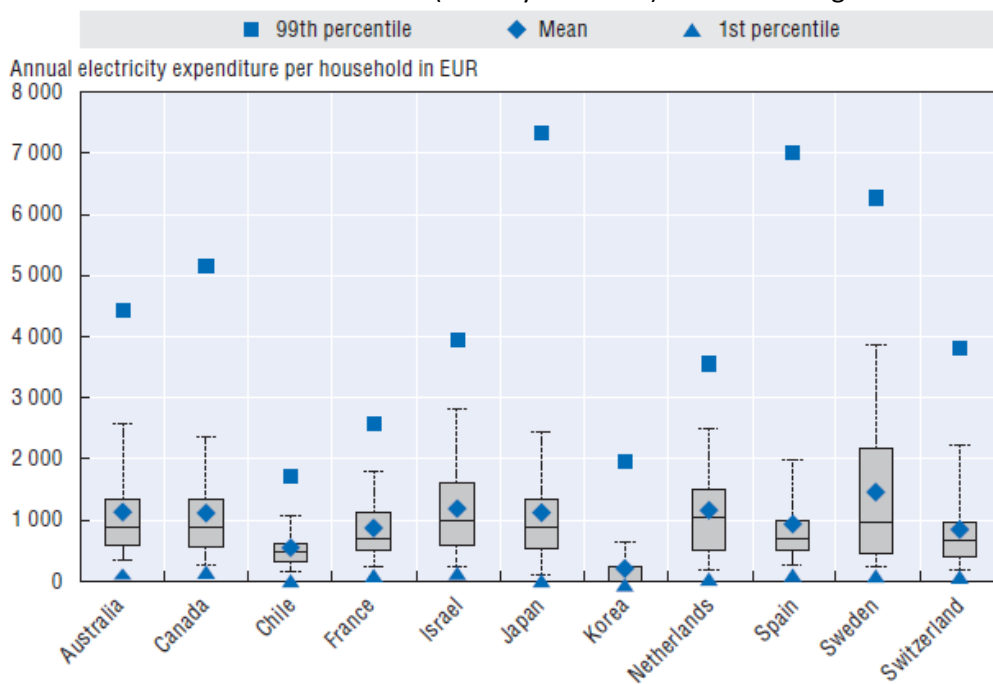
The Figure 2.13 “Dissatisfaction with air quality and household location” has been replaced. The corrections affect the axis text (country inversion). The correct figure reads:



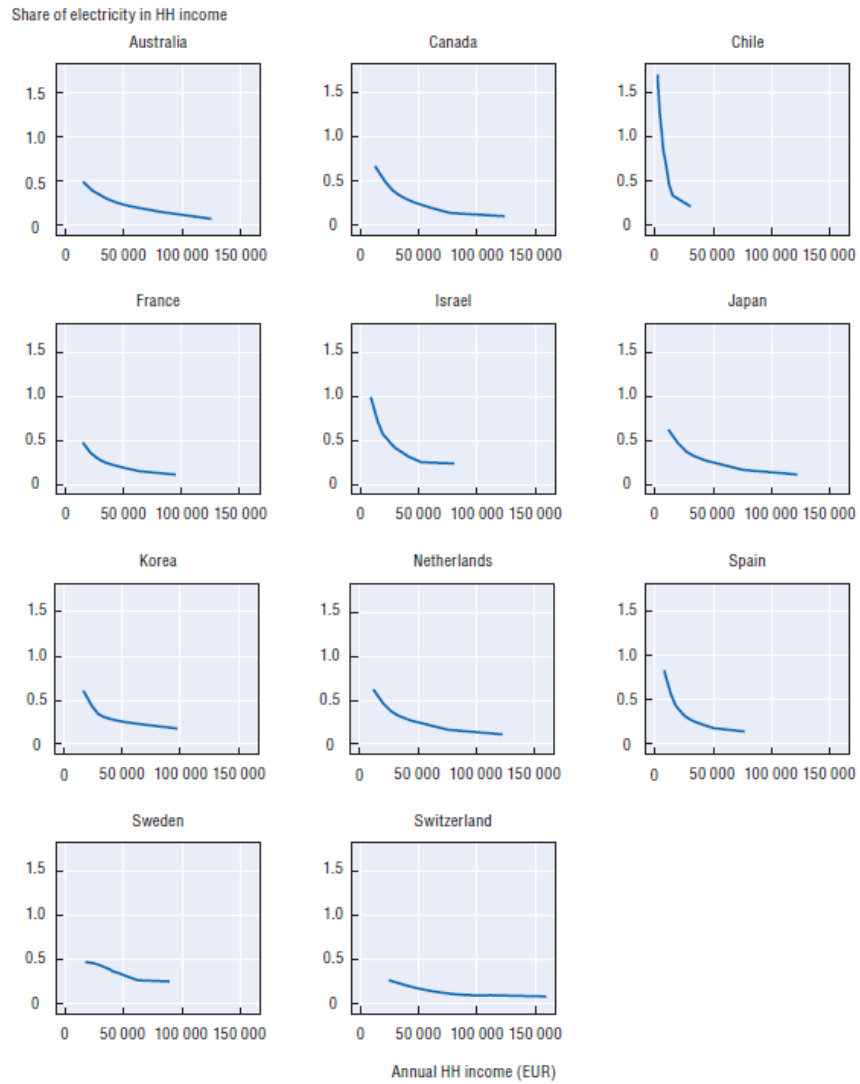
The Figure 2.14 “Respondents who believe that human activities contribute to climate change, by level of post-secondary education” has been replaced. The corrections affect the axis text (country inversion). The correct figure reads:



The Figure 3.1 “Distribution of households’ reported electricity spending, by country” has been replaced. The corrections affect the axis text (country inversion). The correct figure reads:

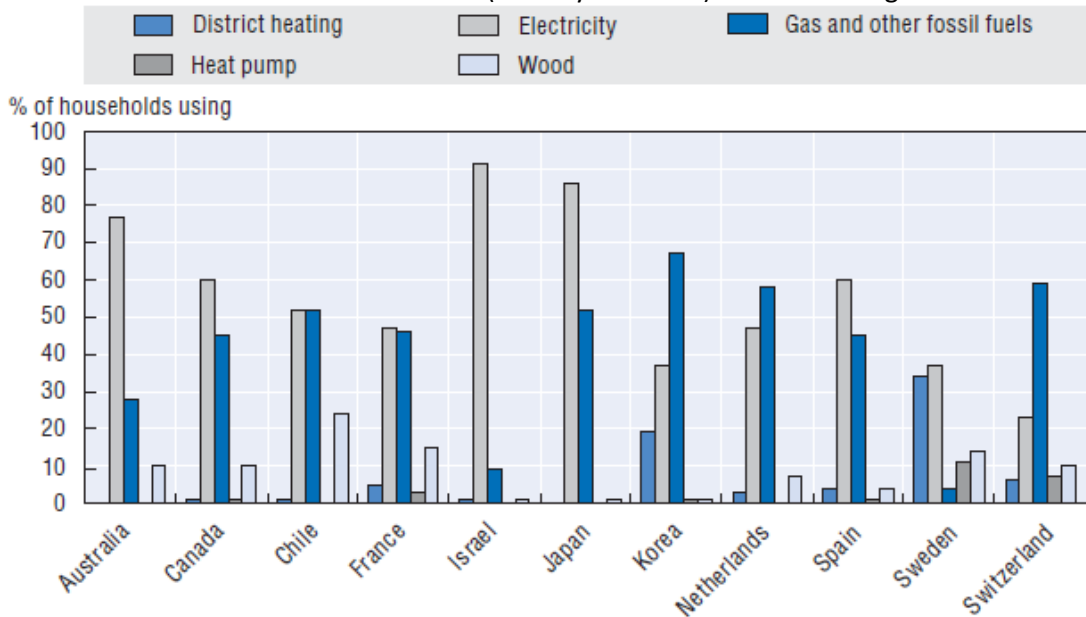


The Figure 3.3 “Relationship between household electricity budget share and income, by country” has been replaced. The corrections consist of graph inversion. The correct figure reads:

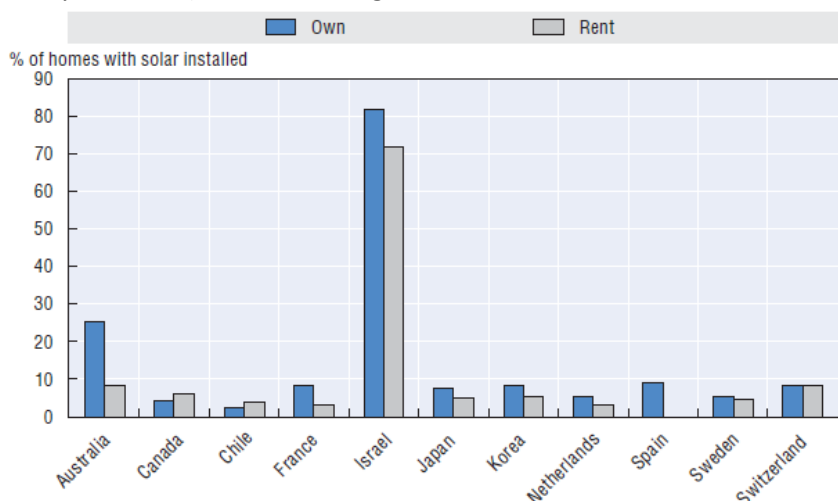


Page 86

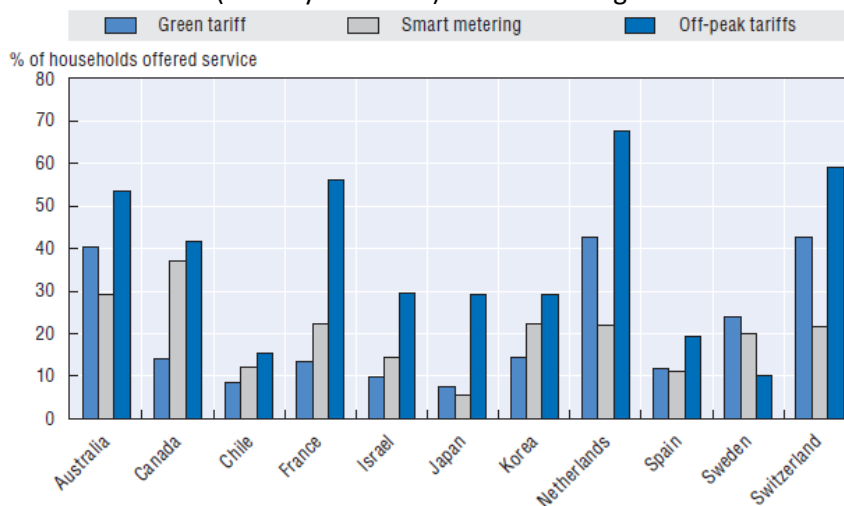
The Figure 3.5 “Reported energy sources for space heating and cooling, by country” has been replaced. The corrections affect the axis text (country inversion). The correct figure reads:



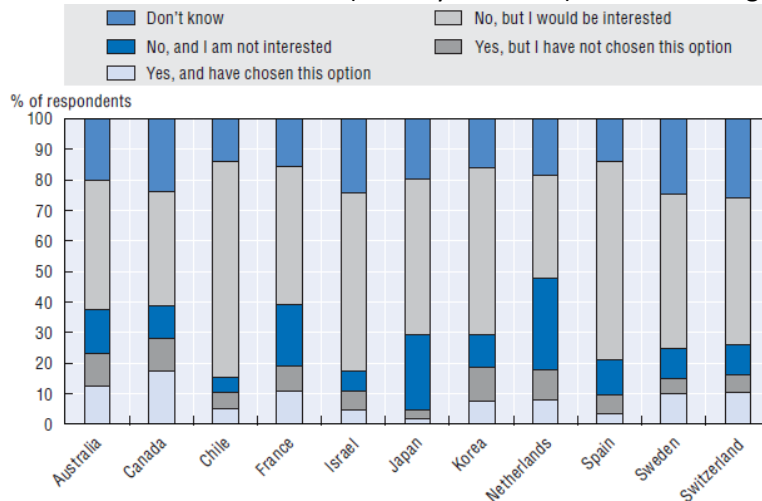
The Figure 3.6 “Reported installation of solar panels” has been replaced. The corrections affect the axis text (country inversion). The correct figure reads:



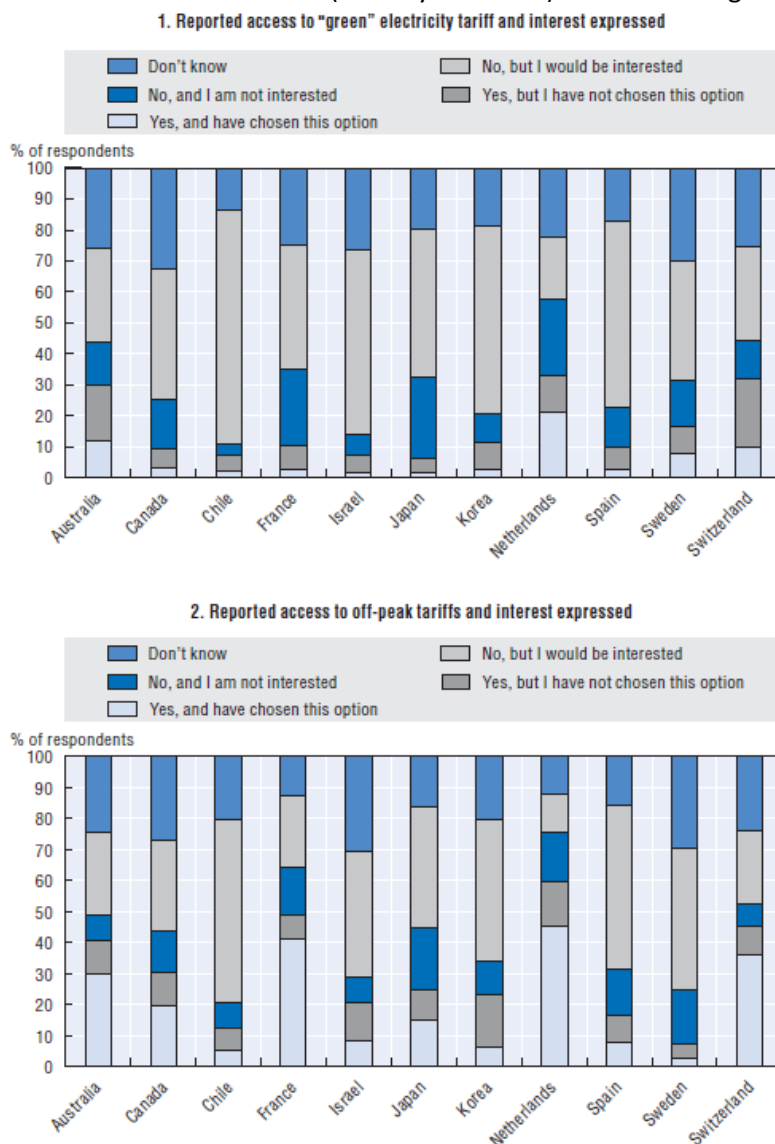
The Figure 3.7 “Reported provision of special electricity services” has been replaced. The corrections affect the axis text (country inversion). The correct figure reads:



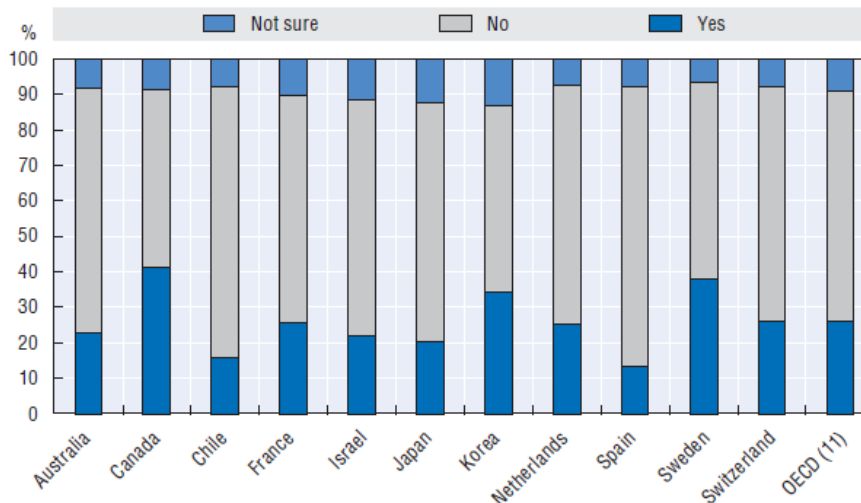
The Figure 3.8 “Reported access to smart metering and interest expressed, by country” has been replaced. The corrections affect the axis text (country inversion). The correct figure reads:



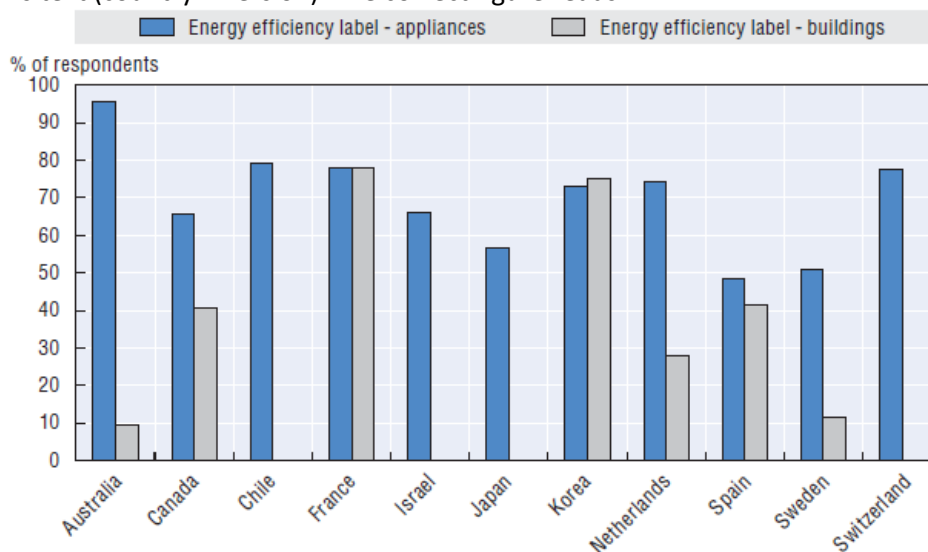
The Figure 3.9 (1&2) “Reported demand for differentiated electricity rates, by country” has been replaced. The corrections affect the axis text (country inversion). The correct figure reads:



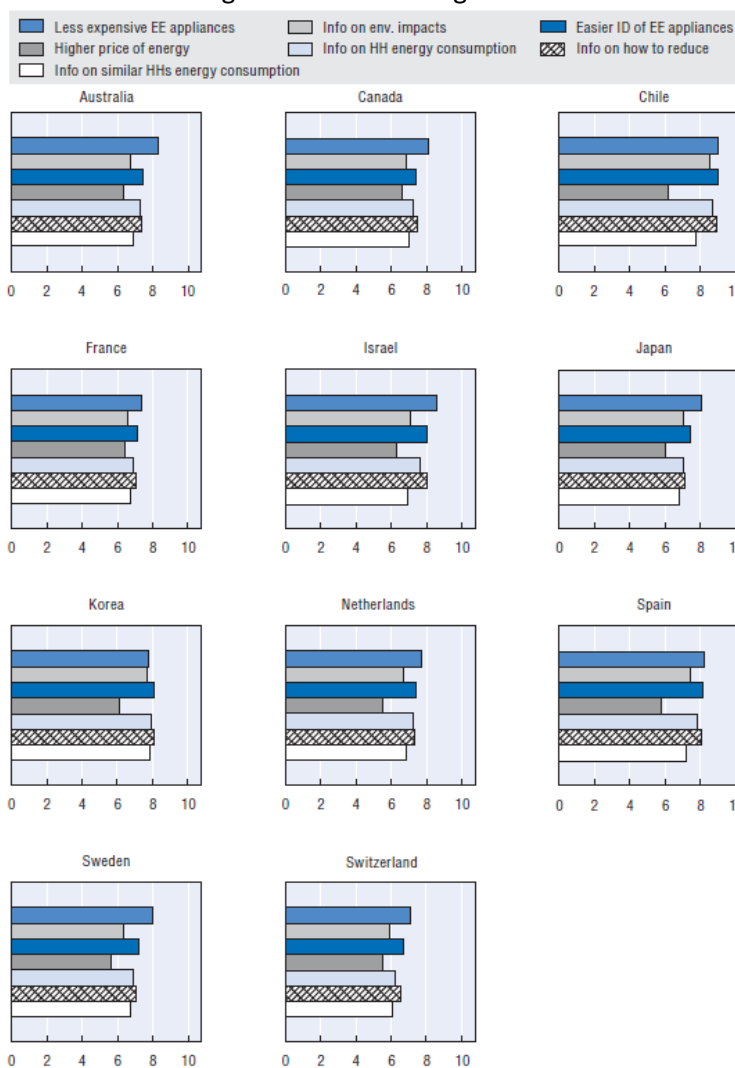
The Figure 3.13 “Percentage of respondents reporting taking into account energy costs when changing residence” has been replaced. The corrections affect the axis text (country inversion). The correct figure reads:



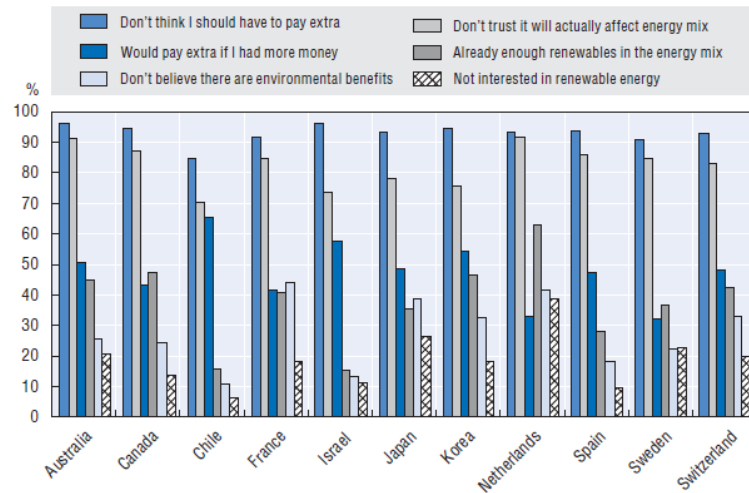
The Figure 3.16 “Recognition of energy efficiency label: appliances and buildings”. The corrections affect the axis text (country inversion). The correct figure reads:



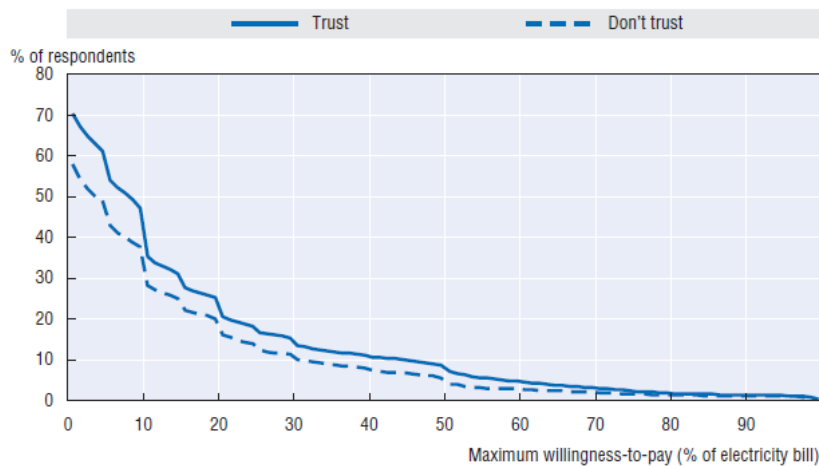
The Figure 3.18 “Motivations to reduce energy consumption at home, by country” has been replaced. The corrections affect the legend. The correct figure reads:



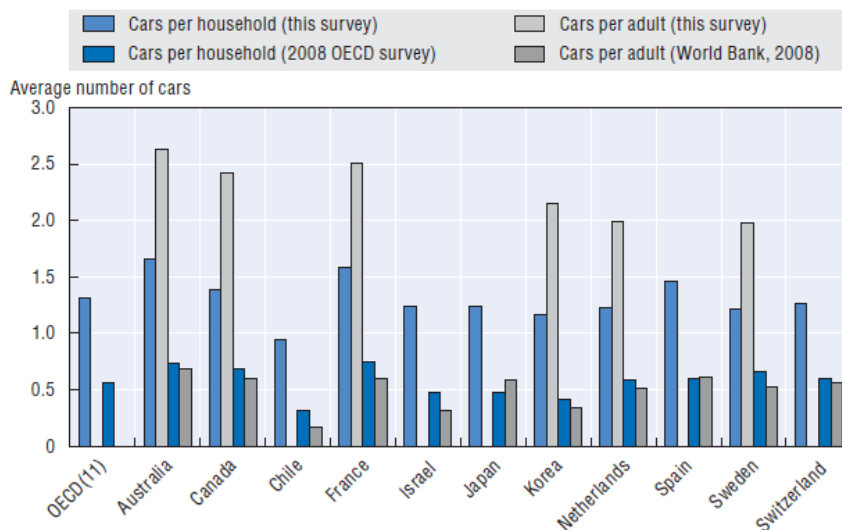
The Figure 3.21 “Reasons for not wanting to pay any extra for renewable energy” has been replaced. The corrections affect the legend. The correct figure reads:



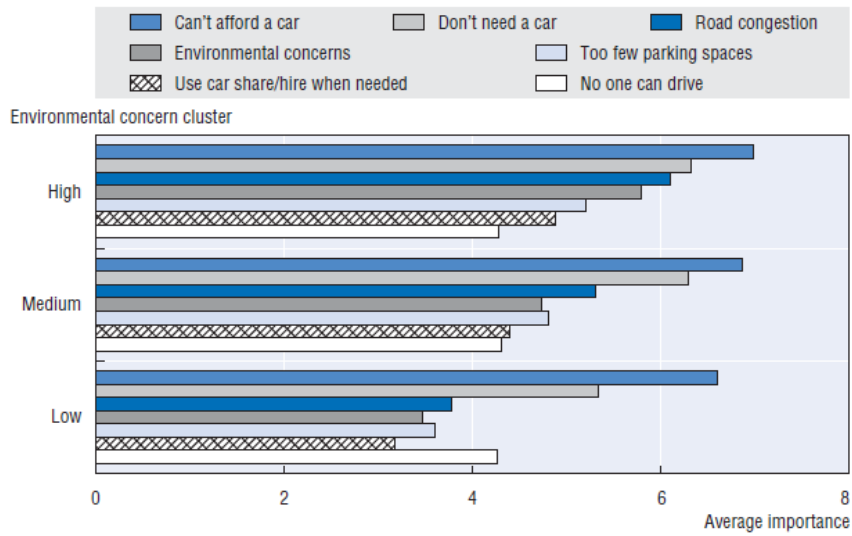
The Figure 3.22 “Willingness-to-pay for renewable energy by level of trust in environmental information from government” has been replaced. The corrections affect the legend. The correct figure reads:



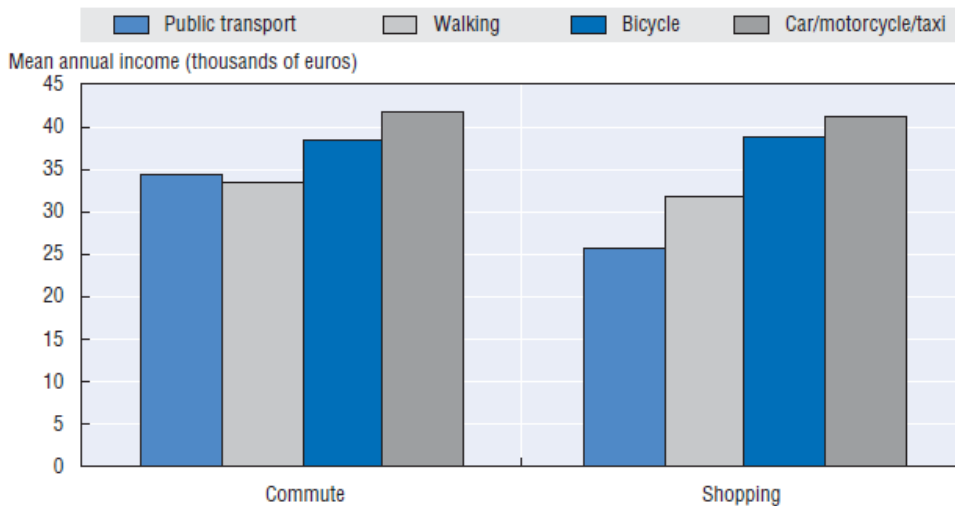
The Figure 4.4 “Reported car ownership rates by country” has been replaced. The corrections affect the legend. The correct figure reads:



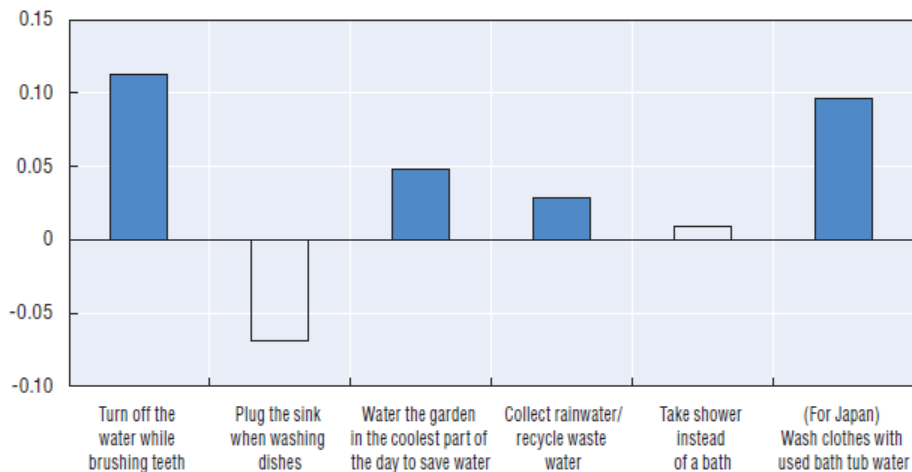
The Figure 4.9 “Reasons for not owning a car, by environmental concern” has been replaced. The corrections affect the axis and the legend. The correct figure reads:



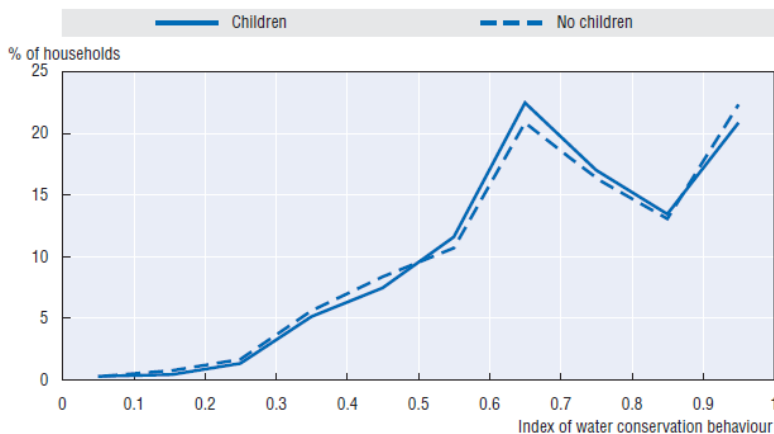
The Figure 4.27 “Mean annual income by type of trip and most frequent mode” has been replaced. The corrections affect the axis. The correct figure reads:



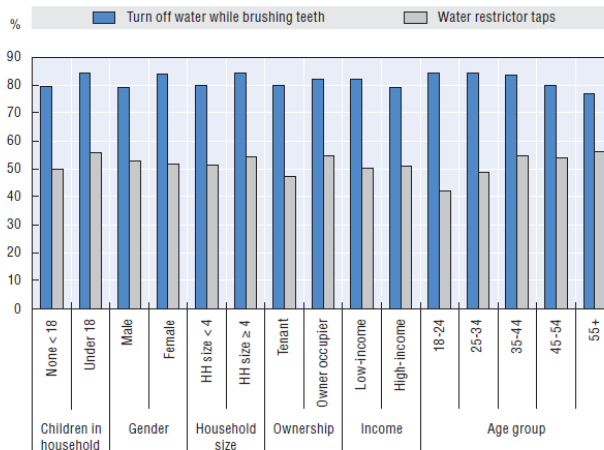
The Figure 5.5, “Spearman correlation between water-saving behaviours and unit pricing” has been replaced. The corrections affect the axis. The correct figure reads:



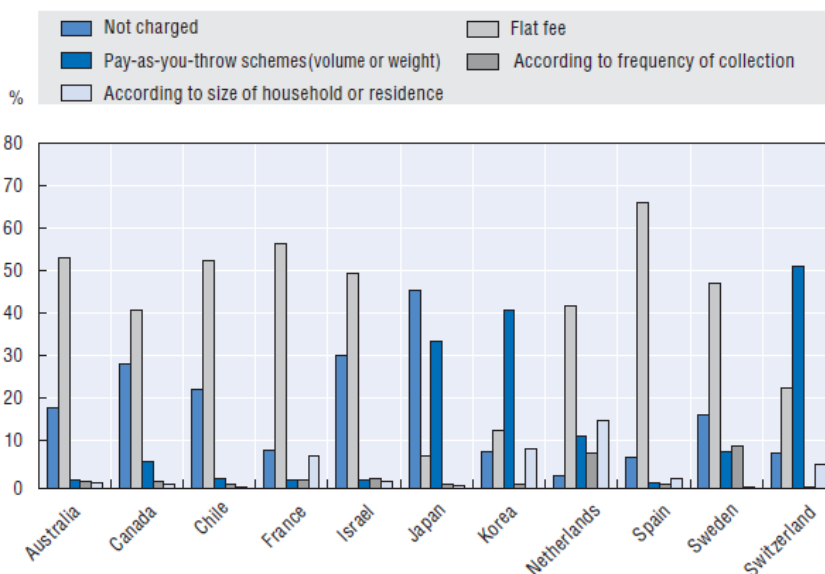
The Figure 5.10 “Relationship between presence of children and index of water conservation behaviours” has been replaced. The corrections affect the legend. The correct figure reads:



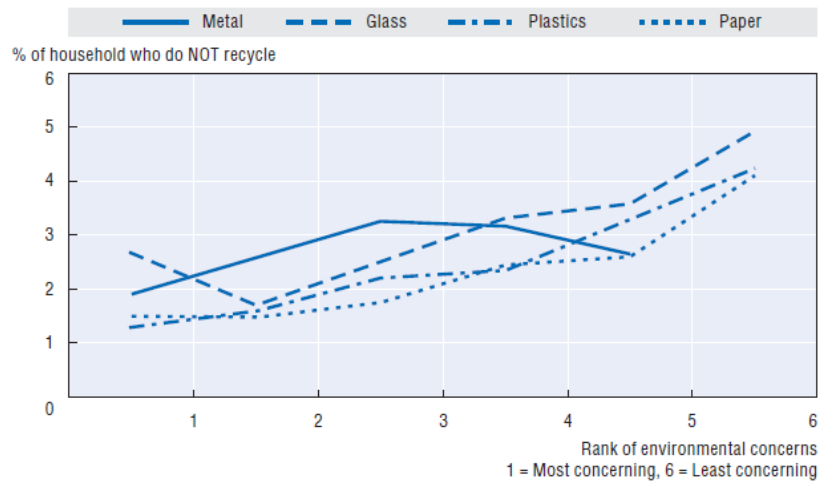
The Figure 5.19 “Water-saving behaviour and investments, and demographic characteristics” has been replaced. The corrections affect the axis. The correct figure reads:



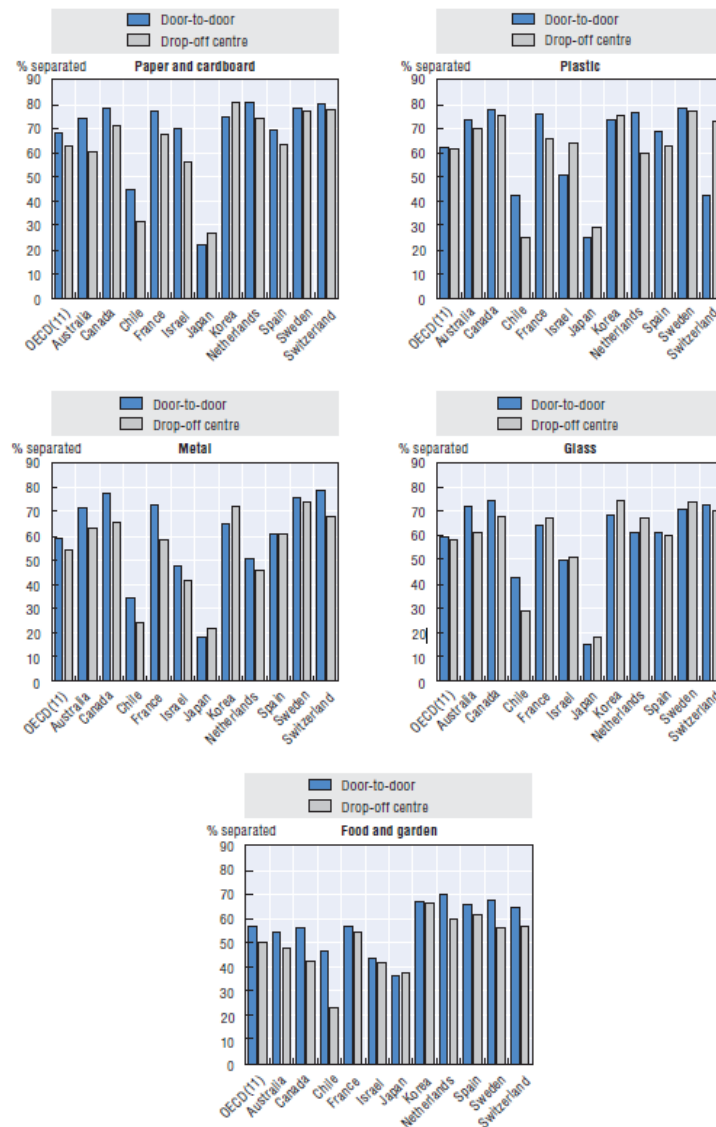
The Figure 7.6 “Households reporting having a pay-as-you-throw and other billing systems for mixed waste disposal, by country” has been replaced. The corrections affect the legend. The correct figure reads:



The Figure 7.13 “Waste separation and importance of environmental concerns relative to other global issues” was replaced. The corrections affect the legend. The correct figure reads:



The Figure 7.17 “Household separation rates by type of waste, service availability and by country” has been replaced. The corrections affect the axis text (country inversion). The correct figure reads:



The Figure 8.7 “Commuting by public transport and willingness to compromise lifestyle” has been replaced. The corrections affect the legend. The correct figure reads:

